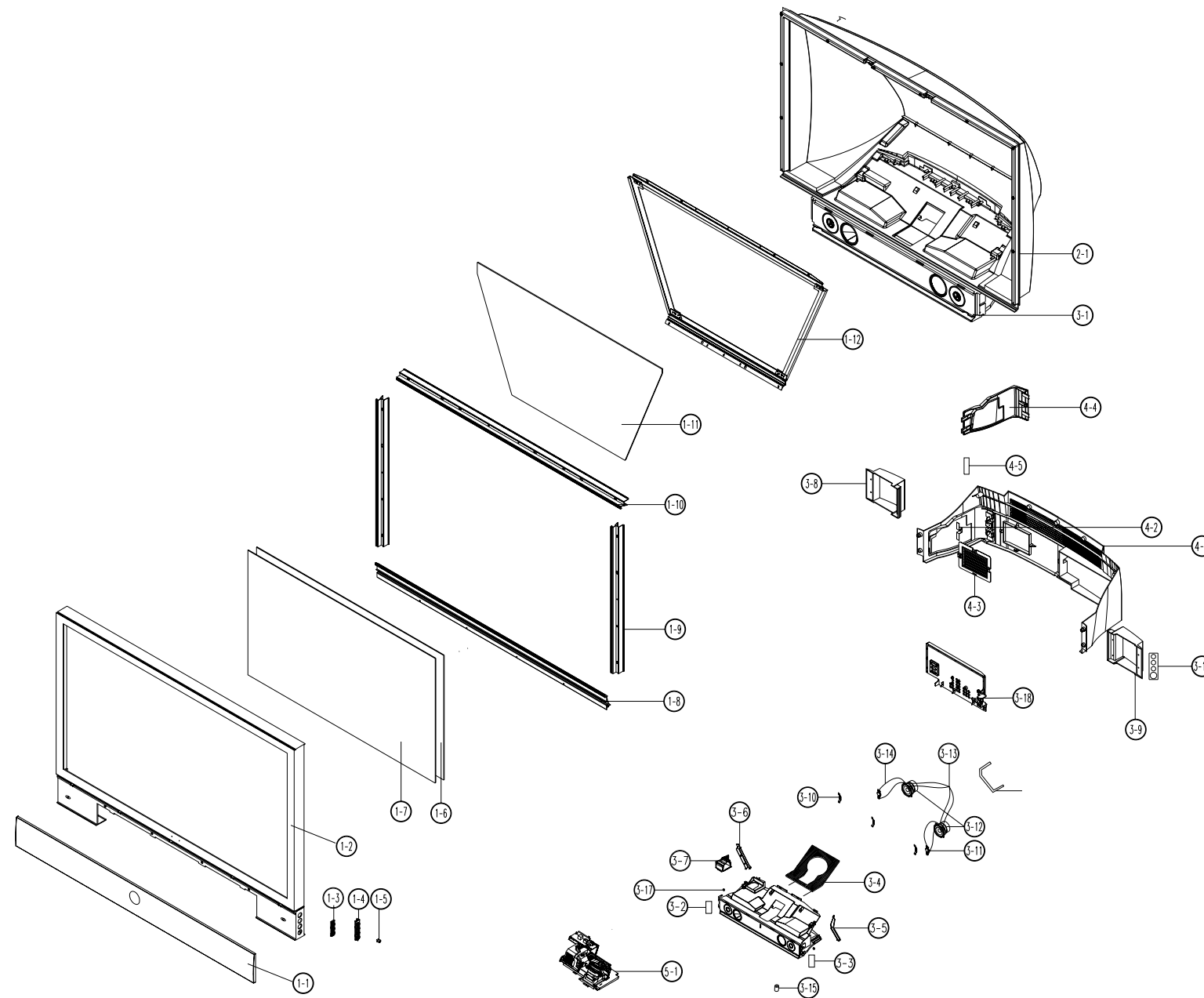


## 7. Exploded View & Parts List

### 7-1 HLN617WX/XAC

You can search for the updated part code through ITSELF web site.  
 URL : <http://itself.sec.samsung.co.kr>



No	Code No	Description	Specification	Q'ty	S.N.A
1-1	BP96-00256A	ASSY COVER P-GRILL;DP,BP96-00157E,61L2,M		1	A/GRILLE
1-2	BP96-00257A	ASSY COVER P-FRONT;DP,BN63-00372F,61L2,M		1	A/CFRONT
1-3	BP64-00072A	KNOB-FAMILY;617W,ABS HB,GRAY		1	
1-4	BP64-00074A	KNOB-HOLDER;617W,ABS HB,GRAY		1	
1-5	BP64-00073A	KNOB-POWER;617W,ABS HB,GRAY,SVM-3012		1	
1-6	BP64-00098A	SCREEN FRESNEL;617W,PMMA,1381*790,T1.5		1	SF
1-7	BP64-00099A	SCREEN LENTI;61W,PMMA,1381*790,T2.1		1	SL
1-8	BP61-00248A	BRACKET-SCREEN BOT ASSY;DP,BP61-00162A,6		1	BSB
1-9	BP61-00246A	BRACKET-SCREEN SIDE ASSY;DP,BP61-00160A,		2	BSS
1-10	BP61-00247A	BRACKET-SCREEN TOP ASSY;DP,BP61-00161A,6		1	BST
1-11	BP67-00043A	MIRROR-FRONT,DM1;61,GLASS,1197*678*629,		1	MF
2-1	BN63-00373C	COVER-BACK;61W DLP,HIPS,V0,GRAY,DG-703P		1	CBACK
3-1	AA64-00548D	CABINET-MAIN;43J6,HIPS,V0,G4309,SV-012P		1	CMAIN
3-2	BP61-00104A	BRACKET-FRONT,R;617W,SECC-1,T1.6,CLR		1	BFR
3-3	BP61-00127A	BRACKET-FRONT,L;617W,SECC-1,T1.6,CLR		1	BFL
3-4	BP60-00013A	SPACER-DUST COVER;SPONGE PE FOAM BLK V0		1	S/DUST
3-5	AA61-00853B	BRACKET-SUPPORT,L;50J6,SECC-1,T1.6,NTR		1	BS
3-6	AA61-01202A	BRACKET-SUPPORT;507W,SECC-1,T1.6,NTR		1	BS
3-7	BP61-00105A	HOLDER-BACK,R;HIPS V0,GRAY,DG-703P		1	
3-8	BP61-00106A	HOLDER-BACK,L;HIPS V0,GRAY,DG-703P		1	
3-9	AA61-00165B	BRACKET-GRILLE;43J6,SECC-1,T1.0,-,-,BLK,		4	BG
3-10	3001-001144	SPEAKER;25W,70HM,88DB,1.6KHZ		2	SPK
3-11	3001-001282	SPEAKER;25W,80HM,90DB,55HZ		2	SPK
3-12	BP39-00044A	LEAD CONNECTOR;L62A/HLM507W,UL1007#22,UL		1	L/SPK
3-13	AA39-00086A	LEAD CONNECTOR-ASSY;2.2UF,REC,REC,200MM		2	L/SPK
3-14	AA63-60117A	SPACER-FOOT;SVP403J,NEOPRENE,-,-,BLK,-		2	S/FOOT
3-15		ASSY MISC P-SUPPORT BACK;507W		1	
3-16	AA61-00678B	HOLDER-BOSS;43/50L2,HIPS,NTR,HB		2	HBOSS
3-17	BP96-00261A	ASSY COVER P-TERMINAL BOARD;DP,BP96-0008		1	A/TB
3-18	BP64-00075A	INLAY-A/V;PS SHEET,TO.3,DG703P		1	INL+HB
4-1	AA64-02831A	CABINET-BACK,BOT;507W,HIPS,V0,GRY,G4309		1	CBB
4-2	AA61-10379B	BRACKET-COVER;SP43J6,SECC-1,T1.0,-,-,-		1	BC
4-3	AA61-01201A	BRACKET-DUCT,OUT;507W,SECC-1,TO.8,BLK		1	BDO
4-4	AA63-00598A	COVER-LAMP;507W,HIPS,V0,GRY,G4309		1	CL
4-5	AA64-00578B	INLAY-LAMP;43J6,PS SHEET,TO.3,-,-,BLK,-		1	INLAMP
5-1	BP91-00787B	ASSY MISC-ENGINE,MECHA;61 DLP,,ENGINE		1	A/ENG